

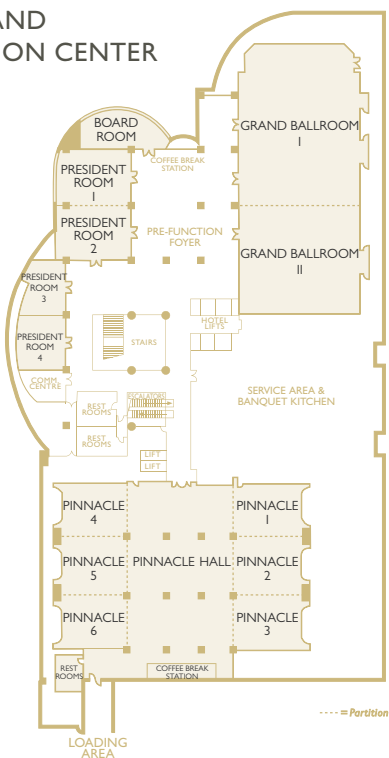


BANGKOK

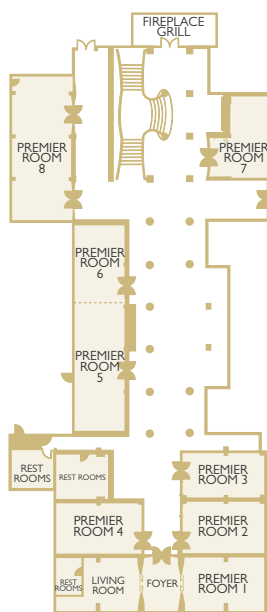
InterContinental Meetings are designed to capture a genuine sense of place that will inspire delegates and get results. Our experienced team understands the demands on your time as a busy event planner and is focused on making sure that the process runs seamlessly at every stage. Whatever the event, the InterContinental Meetings team is here to make life easier for you and to create a rewarding occasion for those attending.

MEETING AND CONVENTION CENTER

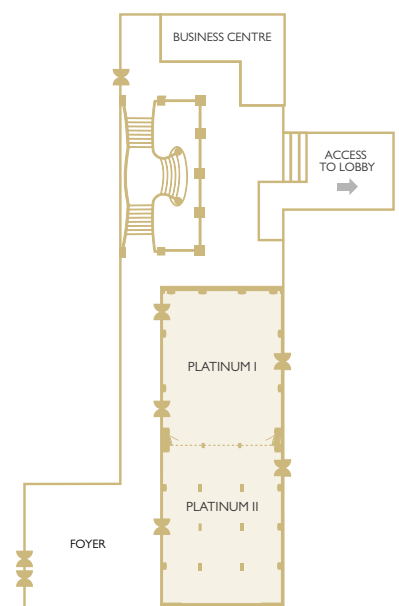
Level 4



Ground Level



Lobby Level



MEETINGS AND EVENTS

Banqueting, meeting and convention facilities at InterContinental Bangkok are among the city's most spacious and versatile. The hotel offers 22 function rooms with its largest, an elegant Grand Ballroom, accommodating up to 1,000 guests cocktail style. InterContinental Bangkok dedicated exhibition area encompasses an expansive hall with capacity for up to 2,000 visitors and exhibitors.

On-site technical features include: high-intensity LED lighting fixtures with advanced color mixing technology, video streaming, conferencing and recording capabilities, satellite communications, mobile projection systems, and centrally controlled LCD display screens. Full secretarial services available.

Our Meeting Instant Service team assists from enquiry stage to event completion. Food and Beverage considerations, including custom-designed menus, are expertly handled by the Executive Chef and professional catering team. The hotel's own Events Café serves complimentary all-day refreshments such as freshly made coffee and tea as well as snacks and fruits.

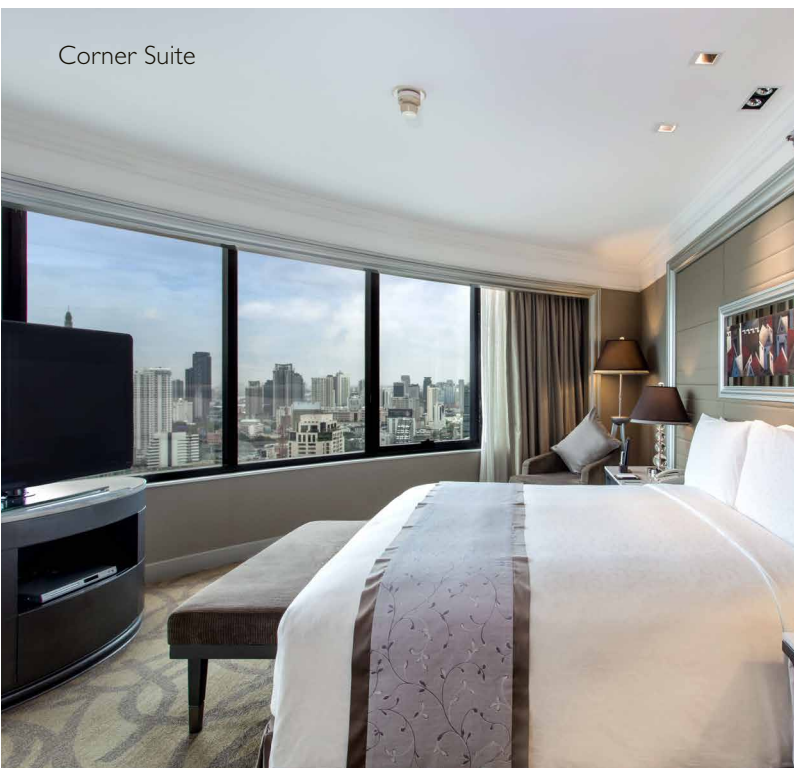
Business Insider

InterContinental Bangkok "Insider Collection" brings a new dimension to corporate conferences and meetings. The programme offers event participants a carefully researched selection of activities based on our 'In the Know' expertise, the collection comprising five elements: Insider Location, Insider Speaker, Insider Community, Insider Interaction and Insider Break.

Customised activities can be made part of delegates' schedules. Examples include attendance at a major Muay Thai (Thai Boxing) match as well as an opportunity to gain insight into Thai culture and traditions from expert guest speakers.



Corner Suite



THE HOTEL

Nested within Ratchaprasong, one of the pre-eminent business and commercial districts of the city and home to many international companies' HQ, embassies and top medical facilities, InterContinental Bangkok offers, with its prime location, easy access to major shopping destinations such as Gaysorn (direct connection), Central World and Siam Paragon (both within walking distance). Traveling through Bangkok is made convenient and efficient with the BTS SkyTrain Chit Lom station standing in front of the hotel.

Cultural sites in the immediate area include famous Erawan Shrine, situated opposite the hotel. As for the city's many other cultural and historical points of interest, our knowledgeable Concierge Team will be delighted to connect guests with what makes Bangkok so alluring.

Attendees staying at InterContinental Bangkok will appreciate its spacious rooms and suites, superb array of dining experiences, outstanding facilities and impeccable personalised service.

ACCOMMODATION

InterContinental Bangkok comprises 381 luxury guests rooms, including Club InterContinental rooms and a range of suites. Starting from the 17th floor of President Tower, each room benefits from thrilling views of Bangkok skyline and features superior amenities for full comfort and convenience.

- Spacious guests rooms starting from 45 sqm.
- WIFI and broadband high speed internet access
- Universal electric outlets
- Posturepedic mattress of Sealy brand with pillow selection available.
- Ergonomic work space with stationary
- Marble bathroom including both bathtub and oversized shower with Agraria luxury amenities
- 24-hour in-room dining
- Minibar plus tea and coffee making facilities.
- Double-glazed windows

TYPE OF ROOMS

	Size (sqm.)	No. of rooms
Grande Deluxe	45	229
Executive Deluxe	45	47
Corner Suite	67	19
Club InterContinental	45	66
Club InterContinental Suite	67	14
Premier Suite	70	1
Executive Suite	90	1
Ambassador Suite	98.5	2
Diplomatic Suite	150	1
Royal Suite	250	1

EVENT DESTINATION

Gracious people and welcoming culture are only a few of the many qualities Thailand has to offer to travellers. With its airport ranked within top 10 busiest worldwide, easy to reach international hub Bangkok is one of the most visited cities in the world and a preferred destination for MICE market. Hold your event at InterContinental Bangkok and you will experience the very best of Thai culture and hospitality. From enquiry stage to event end, you will come to know the genuine smiles and meticulous attention to detail that define Thailand and indeed our hotel. And since we are in the heart of one of the world most beguiling cities and nearby many cultural and leisure sites, event organisers and attendees will have even more on their agendas to look forward to.





RESTAURANTS AND BARS

FIREPLACE GRILL AND BAR

Discover why award-winning Fireplace Grill and Bar has been delighting diners with prime steaks and fresh seafood since 1966.

Lunch: 12:00 - 14:30 hours (Monday to Friday)
 Dinner: 18:30 - 22:30 hours (Monday to Sunday)
 Capacity: 65 seats including 1 private room
 Location: Ground level

THEO MIO ITALIAN KITCHEN

Theo Mio by renowned chef Theo Randall defines contemporary Italian cuisine in Bangkok. Enjoy seasonal dishes along with outstanding wines and signature cocktails in a stylish, relaxed setting.

Daily: 11:30 - 23:30 hours
 Capacity: 94 seats
 Location: Ground level

ESPRESSO

Extensive buffets and à la carte selection from the four corners of the world. Each week culminates in a special seafood, champagne and Sunday jazz brunch.

Breakfast: 06:00 - 10:30 hours
 Monday - Saturday Lunch: 12:00 - 14:30 hours
 Monday - Sunday Dinner: 18:00 - 22:30 hours
 Sunday Brunch: 12:00 - 15:00 hours
 Capacity: 200 seats
 Location: Mezzanine level

SUMMER PALACE

Serving authentic Cantonese cuisine, Summer Palace is highly favoured for its dim sum, à la carte dining and Chinese banquets. Ten richly appointed dining rooms also make it the first choice for special occasions.

Lunch: 11:30 - 14:30 hours (daily)
 Dinner: 18:00 - 22:30 hours (daily)
 Capacity: 220 seats including 10 private rooms
 Location: Mezzanine level

BALCONY LOUNGE AND HUMIDOR CIGAR BAR

A sophisticated ambiance for wines by the glass, cocktails, world's finest whiskies and cigars.

Daily: 08:00 - 01:00 hours
 High Tea: 14:30 - 17:30 hours
 Capacity: 74 seats
 Location: Lobby level

DELI

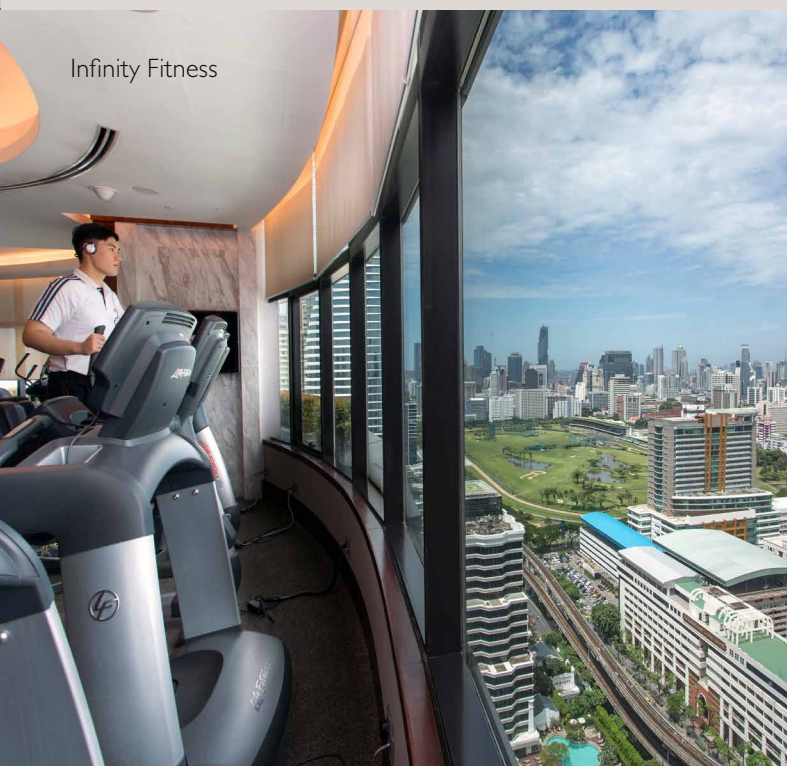
Coffee culture in a chic yet casual European café atmosphere. Offering an enticing selection of freshly made gourmet sandwiches, quiches, pastries, cakes and many more.

Daily: 08:00 - 19:00 hours
 Capacity: 45 seats
 Location: Lobby level

OASIS POOL BAR

Relax by the hotel rooftop swimming pool with drinks and light bites. Featuring panoramic views of Bangkok's skyline.

Daily: 07:00 - 22:00 hours
 Location: Level 37



Infinity Fitness



Oasis Pool Bar

HOTEL FACILITIES

ROOFTOP SWIMMING POOL AND OASIS POOL BAR

A tranquil environment to relax after a long day at work or play. Offering cool drinks and classic cocktails with panoramic views of the city skyline.

Open daily from 07:00 to 22:00 hours.

INFINITY FITNESS

Get fit to inspiring views high above Bangkok. Our exercise and fitness facility provides advanced equipment along with personalised service. Group exercise classes available including Yoga and Pilates.

Open 24 hours daily for in-house guests.

SPA INTERCONTINENTAL

An urban spa experience with sweeping views of the city skyline and one where every element is customised to your needs. Attain serenity with an array of treatments to suit any schedule or lifestyle. Our soothing rituals incorporate today's advanced spa technologies while honouring the traditions and culture of Thailand.

Open daily from 09:00 to 23:00 hours.

CONCIERGE LOUNGE

InterContinental 'In The Know' Concierge team provide valuable local knowledge and personalised recommendations to enrich stays and broaden outlooks. Additional amenities include iPads for interactive maps, virtual tours, video recommendations and travel information.

Open daily from 06:00 to 23:30 hours.

OTHER HOTEL FACILITIES AND AMENITIES

- Complimentary Wi-Fi in public areas
- 24-hour in-room dining
- Laundry and dry cleaning service
- Limousine service
- Business center
- Post and parcel service
- Doctor on-call 24 hours
- Direct connection to Gaysorn village
- Disabled-accessible rooms
- Complimentary parking for up to 800 cars for events or meetings

GENERAL INFORMATION

- Local currency: Thai baht (THB)
- Time: GMT +7
- Temperature, average ranges: low 22° C - 27° C, high 32° C - 36° C

LOCATION

- On Phloen Chit Road offering convenient access for business and leisure travellers
- Directly adjacent to BTS SkyTrain Chit Lom station
- 30 km. from Suvarnabhumi International Airport by car via expressway.
- 40 minutes from Suvarnabhumi International Airport via the Airport link – simply catch the express train from the airport to Phaya Thai station (city station) and connect to Chit Lom BTS Skytrain station, which is directly adjacent to the hotel.
- 23 km. from Don Muang Domestic Airport by car via expressway.

									
Name of Room	Cocktail Reception	Banquet-Style	Theatre Style	Classroom Style	Cabaret (m)	U-Shape	Conference Hollow	Size (Sq.m)	Height (m)

INTERCONTINENTAL CONVENTION CENTER - LEVEL 4

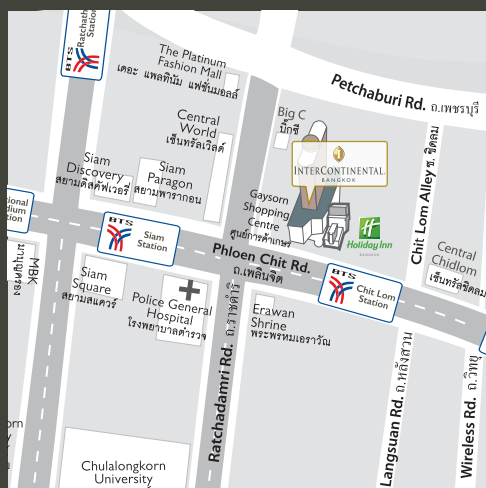
Ballroom I	300	250(s)	500(s)	250(s)	280	80(s)	100	520	7.8
Ballroom II	200	150(s)	200(s)	150(s)	160	50(s)	80	340	7.8
Grand Ballroom (I&II)(s)	1,200	550(s)	800(s)	400(s)	520	130(s)	100	860	7.8
Grand Ballroom (I&II)	800	650	900	450	-	140	100	860	7.8
Ballroom Foyer	-	-	-	-	-	-	-	300	-
Boardroom	-	-	-	-	-	-	22	84	3.8
President Room 1	60	50	70	36	40	25	32	108	3.8
President Room 2	60	50	70	36	40	25	32	108	3.8
President Room 1-2	80	120	168	72	88	34	54	216	3.8
President Room 3	20	20	30	18	24	10	20	63	3.8
President Room 4	30	30	30	18	32	18	24	72	3.8
Pinnacle Foyer	700	-	-	-	-	-	-	600	3.8
Pinnacle 1	50	50	70	36	40	25	30	99	3.8
Pinnacle 2	50	50	70	36	40	25	30	99	3.8
Pinnacle 3	50	50	70	36	40	25	30	99	3.8
Pinnacle 4	50	50	70	36	40	25	30	99	3.8
Pinnacle 5	50	50	70	36	40	25	30	99	3.8
Pinnacle 6	50	50	70	36	40	25	30	99	3.8
Pinnacle 1-2, 2-3, 4-5, 5-6	80	120	140	72	88	50	60	198	3.8
Pinnacle 1-3, 4-6	120	150	210	108	144	75	80	297	3.8
Pinnacle Hall	1,500	750	-	-	00	-	-	1,250	3.8

INTERCONTINENTAL MEETING HALL - GROUND LEVEL

Premier Room 1	-	-	-	-	-	-	12	40	2.3
Premier Room 2	-	20	30	20	28	-	-	38	2.3
Premier Room 3	-	20	30	18	14	-	-	30	2.3
Premier Room 4	-	20	30	20	21	-	-	38	2.3
Premier Room 5	-	30	40	36	28	-	-	57	2.2
Premier Room 6	-	20	30	24	14	-	-	41	2.2
Premier Room 5-6	-	50	80	60	56	-	-	98	2.2
Premier Room 7	-	10	-	-	-	-	10	30	2.3
Premier Room 8	-	30	56	42	42	-	-	65	2.3
Platinum I (s)	100	120(s)	160(s)	80(s)	48	30(s)	40	216	2.7
Platinum I (LL)	150	150	190	120	96	40	50	216	2.7
Platinum II (LL)	50	70	40	30	160	27	-	216	2.7

s: Stage

LL: Lobby Level



InterContinental Bangkok

973 Phloen Chit Road, Lumpini, Pathum Wan,
Bangkok 10330, Thailand

Tel: +66 2 656 0444

General information and reservations:
intercon@ihgbangkok.com

Banquets, events and seminars:
meetingsandevents@ihgbangkok.com

Restaurants and bars:
dining@ihgbangkok.com

www.bangkok.intercontinental.com